

Flowfast Quartz Scatter Food (2-4mm)

A seamless, rapid curing, MMA coloured quartz floor topping.

Typically used in environments subject to heavy traffic including kitchens and production areas.



Rapid Curing:

MMA additives speed up cure time, reducing construction schedules.



Wear Resistant:

Holds its own against impact, traffic and chemical attack.



Seamless:

Delivers a hygienic seam-free surface that is easy to clean and maintain.



Versatile:

Can be overlaid onto existing hard surfaces such as tiles or marble.

Technical Profile

SLIP RESISTANCE

Method described in AS4586-2013

Dry & Wet Rating is dependant on specification (in accordance with AS4586-2013)

The slipperiness of flooring materials can change significantly, due to the installation process, after short periods of use, due to inappropriate maintenance, longer-term wear and/or surface contaminants (wet or dry).

Textured systems are recommended to meet slip resistance value requirements for wet conditions and/or surface contaminants (wet or dry) - please contact our Technical Advisors for further details

TEMPERATURE RESISTANCE

Tolerant of sustained temperatures up to 70°C

WATER PERMEABILITY

Karsten Test

Nil (Impermeable)

CHEMICAL RESISTANCE

Contact Technical Department

IMPACT RESISTANCE

EN ISO 6272

10Nm

ABRASION RESISTANCE

BS 8204-2

Class AR1

COMPRESSIVE STRENGTH

EN13892-2

60 N/mm²

FLEXURAL STRENGTH

EN13892-2

20 N/mm²

TENSILE STRENGTH

BS6319

15 N/mm²

BOND STRENGTH

ASTM D4541 (Pull-Off Test)

> 1.5MPa*

SPEED OF CURE**

PER COAT

Full Traffic

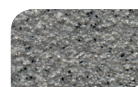
1 hr

Full Chemical Cure

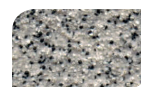
1 hr

These figures are typical properties achieved in laboratory tests at 20°C and at 50% Relative Humidity.

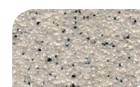
*Assume concrete or substrate is a minimum of 25 N/mm²



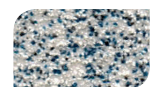
Dark Grey



Mid Grey



Light Grey



Light Blue

The applied colours may differ from the examples shown. For a full colour chart and samples, contact your local Flowcrete office.

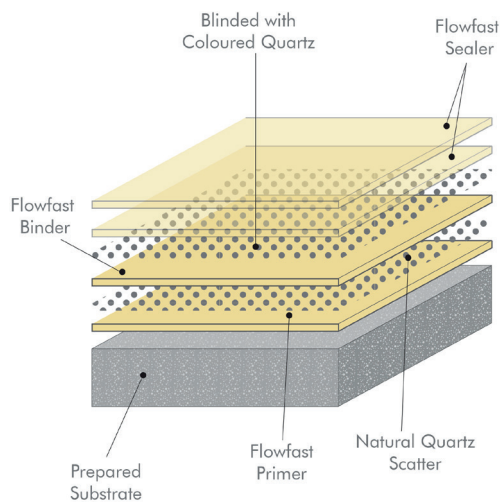
**Cure times at temperatures between 0-30°C can be achieved by altering the quantity of catalyst used. For applications falling outside of this temperature range, please contact your local Flowcrete Technical Department.

Model Specification

System	Flowfast Quartz Scatter Food
Finish	Satin
Thickness	Dependant on Specification
Manufacturer	Flowcrete
Contact	+61 7 3205 7115

Preparatory work and application in accordance with manufacturer's instructions.

System Design



Products Included In This System

Layer 1	Flowfast Primer
	Natural Quartz Scatter
Layer 2	Flowfast Binder
	Blinded with Coloured Quartz
Layer 3	Flowfast Sealer
Layer 4	Flowfast Sealer

Coving

Coving forms an integral part of the flooring system. It creates a sealed finish between the floor and wall joint. Please refer to Flowtex F1 Coving Mortar for further information.

Substrate Requirements

Concrete or screed substrate should be a minimum of 25 N/mm², free from laitence, dust and other contamination. Substrate should be dry to 75% RH as per AS1884-2012. Must be free from rising ground moisture or must have an effective DPM in place.

Installation Service

The installation should be carried out by a experienced contractor with a documented quality assurance scheme. For details of our recommended contractors, contact your local Flowcrete office. Detailed application instructions are available upon request.

Environmental Considerations

The finished system is assessed as non-hazardous to health and the environment. The long service life and seamless surface reduce the need for repairs and maintenance. Environmental and health considerations are controlled during manufacture and application of the products by Flowcrete staff and fully trained application teams.

Aftercare, Cleaning & Maintenance

Please refer to Flowcrete Australia's current Cleaning and Maintenance Recommendations Guide.

Warranty

Flowcrete products are guaranteed against defective materials and manufacture and are sold subject to our standard 'Warranty, Terms and Conditions of Sale', copies of which can be obtained on request. Warranty does not cover suitability, fit for purpose or any consequential or related damages. Please review warranty in detail before installing the products.