

Flowcrete SR (6mm)

A hard-wearing, chemical resistant, hygienic polyurethane resin system which delivers a positively textured gloss finish.

Typically used in workshop, factories and manufacturing zones in industrial facilities.



Durable:

Tough polyurethane resin provides a hard-wearing platform underfoot.



Chemical Resistant:

Protects against attack from corrosive ingredients and cleaning agents.



Slip Resistant:

Contains textured aggregates to provide required slip resistance.



Easy to Clean:

The self-smoothing finish is easy to maintain and sterilise.

Technical Profile

FIRE RESISTANCE - AS/ISO 9239.1

CHF Value	10 kW/m ²
Smoke Value	69% (Mean)

SLIP RESISTANCE

Method described in AS4586-2013	Dry & Wet Rating is dependant on specification (in accordance with AS4586-2013)
---------------------------------	---------------------------------------------------------------------------------

The slipperiness of flooring materials can change significantly, due to the installation process, after short periods of use, due to inappropriate maintenance, longer-term wear and/or surface contaminants (wet or dry).

Textured systems are recommended to meet slip resistance value requirements for wet conditions and/or surface contaminants (wet or dry) - please contact our Technical Advisors for further details

IMPACT RESISTANCE

EN ISO 6272	15Nm
-------------	------

TEMPERATURE RESISTANCE

From -15°C to 90°C (at 4mm) Intermittent Spillages

COEFFICIENT OF THERMAL EXPANSION

ASTM C531	$5.70 \times 10^{-5} \text{ } ^\circ\text{C}^{-1}$
-----------	----------------------------------------------------

WATER PERMEABILITY

Karsten Test	Nil (impermeable)
--------------	-------------------

ABRASION RESISTANCE

Taber Abrader	0.1g loss per 1000 cycles (1kg using CS17 wheels)
---------------	---------------------------------------------------

COMPRESSIVE STRENGTH

EN 13892-2	50 N/mm ²
------------	----------------------

FLEXURAL STRENGTH

EN 13892-2	20 N/mm ²
------------	----------------------

TENSILE STRENGTH

BS6319	7 N/mm ²
--------	---------------------

BOND STRENGTH

ASTM D4541 (Pull-Off Test)	> 1.5MPa
----------------------------	----------

SPEED OF CURE*	10°C	20°C	30°C
Light Traffic	36 hrs	24 hrs	12 hrs
Full Traffic	72 hrs	48 hrs	24 hrs
Full Chemical Cure	10 days	7 days	6 days



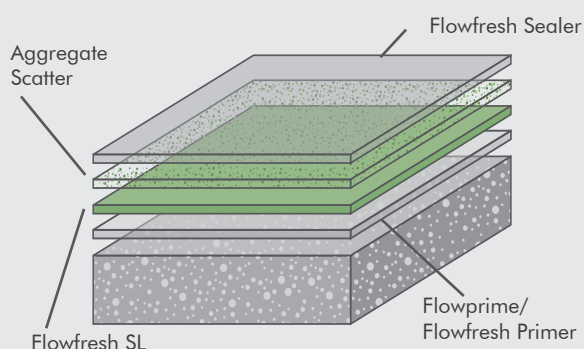
Rich Cream Warm Buff Tile Red Clay
Pewter Grey MF Green Ash Grey Blue

Model Specification

System	Flowcrete SR
Finish	Gloss
Thickness	6mm
Manufacturer	Flowcrete Australia Pty Ltd
Contact	+ 61 7 3205 7115

Preparatory work and application in accordance with manufacturer's instructions.

System Design



Products Included In This System

Layer 1	Flowprime / Flowfresh Primer *Only If Required
Layer 2	Flowfresh SL
	Aggregate Scatter
Layer 3	Flowfresh Sealer

Coving

Coving can form an integral part of the flooring system. It creates a sealed finish between the floor and wall joint. Please refer to Flowtex F1 Coving Mortar for further information.

Substrate Requirements

Concrete or screed substrate should be a minimum of 25 N/mm², free from laitance, dust and other contamination. Substrate should be dry to 75% RH as per ASTM F2170 (AS1884:2012).

Installation Service

The installation should be carried out by a qualified contractor with a documented quality assurance scheme. For details of our recommended contractors, contact your local Flowcrete office. Detailed application instructions are available upon request.

Environmental Considerations

The finished system is assessed as non-hazardous to health and the environment. The long service life and seamless surface reduce the need for repairs and maintenance. Environmental and health considerations are controlled during manufacture of the products by Flowcrete staff.

Aftercare, Cleaning & Maintenance

Clean regularly using a single or double headed rotary scrubber drier in conjunction with a mildly alkaline detergent. Please refer to Flowcrete's Cleaning & Maintenance Guide for further information.

Warranty

Flowcrete products are guaranteed against defective materials and manufacture and are sold subject to our standard 'Warranty, Terms and Conditions of Sale', copies of which can be obtained on request. Warranty does not cover suitability, fit for purpose or any consequential or related damages. Please review warranty in detail before installing the products.

Method Statement

System	Flowcrete SR
Specification	6mm Gloss Finish

This specification assumes a concrete compressive strength greater than 25 N/mm², application and curing temperatures of 10–35°C, the presence of an effective damp proof membrane below substrate and concrete moisture content less than 75% RH. If moisture content is above 75% RH, please contact Flowcrete Australia.

This specification must be read in conjunction with relevant product technical data sheets and the application of all materials is to be strictly in accordance with manufacturer’s instructions.

Manufacturer	Flowcrete Australia Pty Ltd
Address	HQ - Unit 2, 41 Deakin Street
Suburb	Brendale
State	QLD
Postcode	4500
Telephone	+61 7 3205 7115
Email	australia@flowcrete.com

Outline for Installation

Mechanically Prepare Substrate	
Apply Flowprime/Flowfresh Primer	@ 0.2-.4kg/m ²
*Primer only if required for porous substrates.	
Apply Flowfresh SL	@ 7.6kg/m ²
Full Broadcast Quartz Scatter	@ 3kg/m ²
Apply Flowfresh Sealer	@ 0.55kg/m ²

Storage

12 months in an unopened packaging stored at a temperatures of 5-40°C.

Protect from frost, weather, moisture and contaminant ingress.

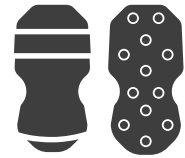
Application Equipment

The use of correct application equipment is critical as incorrect application tools can result in poor finishing and incorrect material consumption. Always test the application equipment prior to commencing work.

The following equipment is recommended for this application.



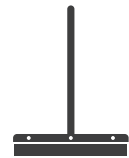
10-12mm Nap Roller
Cover - Lambswool
*Rolana or Equivalent



Spike Shoes



Slow Speed Drill with
Helical Mixer Head



Squeegee



Pin Rake



Spike Roller



Steel Trowel

Safety Precautions

Wear appropriate Personal Protective Equipment (PPE) including masks, gloves, eye protection and protective clothing during mixing and application. Ensure the working area is well ventilated and follow the appropriate Health and Safety guidelines applicable to the location where the application is undertaken.

Material Set-Up

Before commencing work ensure that your material is set-up by separating all components (e.g. Base A, Hardener B, Filler C etc.) to ensure that all material is correct. Check product labels and ensure there are equal amounts of product.

Site Set-Up

Before commencing work ensure that your site is set-up. Mark the floor according to the specification with masking tape or similar to clearly identify what area (m²) each unit will cover. If this is not achieved (greater or less consumption than the specified amount) immediately stop and contact Flowcrete.

Surface Preparation

Surface preparation is to be completed by totally enclosed (light shot blasting) or coarse diamond grinding. All cementitious laitance must be removed to expose a sound substrate and provide a dry, dust free, open textured surface. All hard to reach areas and areas around the perimeter must be prepared using hand held preparation equipment.

Any damaged areas must be repaired with Flowtex F1 mortar. Consult Flowcrete prior to using an alternative repair mortar. Any rough or uneven areas must be made smooth with Flowcoat SC (Universal Resin Base A, Universal Hardener B, Sand/Flour). Consult Flowcrete prior to using an alternative epoxy scratch coat.

Application of Flowprime/Flowfresh Primer

The substrate must be surface dry before the application of either Flowprime or Flowfresh Primer.

1.A Mixing Flowprime

Decant required amount of material by weight using digital scales.

Stir Base A to re-disperse any settlement. Add Hardener B to the Base A container, and drain thoroughly. Mix with a slow speed drill and helical spinner head for 1 minute, taking care not to entrain air. Transfer to a clean container and remix for 30 seconds.

1.B Mixing Flowfresh Primer

Pack components are pre-weighed for optimum performance. We recommend that you do not split or proportion packs.

Stir Base A to re-disperse any settlement. Add Filler C to Base A and mix until uniform. Add Hardener B to the Base A container, and drain thoroughly. Mix with a slow speed drill and helical spinner head for 45 seconds, taking care not to entrain air.

2. Application

Immediately after mixing, apply the either the Flowprime or Flowfresh Primer by squeegee and/or roller.

Application of Flowfresh SL

The substrate must be surface dry before the application of Flowfresh SL. Flowfresh SL must be applied within 24 hours following the application of Flowprime or Flowfresh Primer.

1. Mixing

Pack components are pre-weighed for optimum performance. We recommend that you do not split or proportion packs, however, if supplied in bulk packaging this must be completed by weight using digital scales.

Stir Base A to re-disperse any settlement. Add Pigment and mix until uniform. Transfer to a mixing container. Add Hardener B to the mixing container, and drain thoroughly. Mix with a slow speed drill and helical spinner head for 45 seconds, taking care not to entrain air. Add Filler C and add additional 2kg of 16/30 Silica Sand to mixing container and mix until uniform, approximately 60 seconds.

2. Application

Immediately after mixing, apply the Flowfresh SL by pin rake to the required thickness and finish with a steel trowel. Immediately after application spike roll the surface to assist with levelling the material and to release any entrapped air. Late spike rolling of the material can result in surface defects. Within 10 - 15 minutes (at 20°C) fully broadcast the surface to refusal with the non slip aggregate.

Application of Flowfresh Sealer

The substrate must be surface dry before the application of Flowfresh Sealer. Flowfresh Sealer must be applied within 24 hours following the application of Flowfresh SL.

1. Mixing

Pack components are pre-weighed for optimum performance. We recommend that you do not split or proportion packs.

Stir Base A to re-disperse any settlement. Then add pigment and mix until uniform. Add Hardener B to the Base A container, and drain thoroughly.

Mix with a slow speed drill and helical spinner head for 45 seconds, taking care not to entrain air. Add between 2 - 7% (depending on conditions) Xylene and mix for a further 30 seconds.

2. Application

Immediately after mixing, apply Flowfresh Sealer by squeegee and roller.

Trafficking

Allow to cure for a minimum of 24 hours at temperatures no less than 10°C before light trafficking.

Note

When printed or saved externally, this document is uncontrolled and therefore may not be the latest version. Any recommendation or suggestion relating to the use of the products made by Flowcrete Australia Pty Ltd., whether in its technical literature, or in response to a specific enquiry, or otherwise, is based upon data believed to be reliable, however the products and information are intended for use by Customers having requisite skill and know-how in the industry and therefore it is for the Customer to satisfy itself of the suitability of the products for its own particular use and it shall be deemed that the Customer has done so at its sole discretion and risk.

Additional Notes

1. Maximum overcoat time is 24 hours.
2. The product is fully hardened after 5–7 days.
3. The applied colours may differ from the examples shown.
4. Flowcrete assumes no responsibility for the application of incorrect colour.
5. This system is not UV stable and will discolour unless otherwise stated.
6. Do not cover or wash within the first 24 hours of curing.
7. This system should be installed at 3°C above the dew point.
8. Please ensure application temperature and RH limits are followed.
9. Wind or strong airflow may cause quick curing and drying of the system.
10. Ensure wind or strong airflow is eliminated during application, however adequate safety ventilation should still be followed.
11. Direct heat during application of the system can cause flash curing and potential delamination. Ensure you do not apply this system to substrates with temperatures exceeding 35°C.