

Flowfast Quartz Scatter



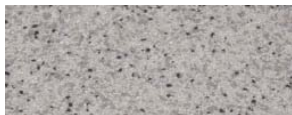
Standard Colour Chart



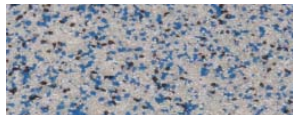
Dark Grey



Mid Grey



Light Grey



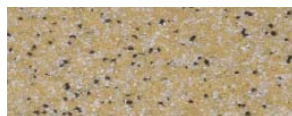
Light Blue



Green



Red



Yellow



Brown

The applied colours may differ slightly from the examples shown above. Contact our customer services for a true colour sample or a special colour match.

Description

Flowfast Quartz Scatter is a hard wearing, decorative, fast curing, methyl methacrylate (MMA) resin floor topping made up of colour stable quartz granules encapsulated in a clear resin binder.

Flowfast Quartz Scatter has been developed to enable very fast track applications, therefore dramatically reducing down time.

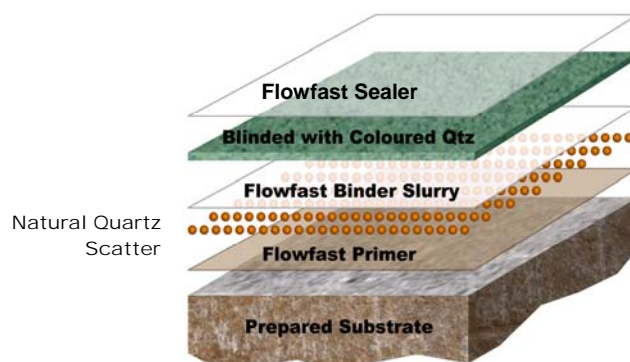
Uses

Ideal for use in production areas, kitchens, wet and dry process areas where the floor is subject to heavy traffic, impact and chemical spills; areas where time for floor repairing and resurfacing is limited.

Benefits

- Fast curing and rapid installation
- Can be overlaid onto existing ceramic tiles, marble, granite or terrazzo floors
- Decorative floor finish
- High scratch resistance
- High abrasion resistance
- Excellent wear and impact resistance
- Good slip resistance
- High chemical resistance
- Seamless and hygienic finish
- Easy to clean and maintain

System Design



Model Specification

Product: Flowfast Quartz Scatter system
Finish: Satin
Thickness: Dependant on specification
Colour: _____
Preparatory work and application in accordance with manufacturer's instructions.
Supplier: Flowcrete Australia Pty Ltd
Telephone: Customer Service - +61 7 3205 7115

Substrate Requirements

Concrete or screed substrate should be a minimum of 25N/mm², free from laitance, dust and other contamination. The substrate should be dry to 95% RH as per BS8204 and free from rising damp and ground water pressure. A special Flowfast primer can be used for substrates up to 100% RH (surface dry).

Products Included in this System

Flowfast Standard Primer
Natural Quartz 0.4-0.8mm
Flowfast Standard Binder Slurry
Coloured Quartz
Flowfast Standard Seal

Consult individual Product Data sheets for information on Flowfast Catalyst levels.

Slip resistant profile can be tailored in the system design to meet client requirements.

Detailed application instructions are available upon request.

Installation Service

The installation should be carried out by a Flowcrete approved applicator with a documented quality assurance scheme. Obtain details of our approved contractors by contacting our customer service team or enquiring via our web site at www.flowcreteaustralia.com.au.

Environmental Considerations

The finished system is assessed as non-hazardous to health and the environment. The long service life and seamless surface reduce the need for repairs, maintenance and cleaning. Environmental and health considerations are controlled during manufacture and application of the products by Flowcrete staff and fully trained and experienced contractors.

Focus on the Floorzone

Flowcrete Australia Pty Ltd is a division of the Flowcrete Group, world leaders in specialist industrial and commercial flooring. Systems available include: underfloor heating systems, floor screeds, surface damp proof membranes, decorative floor finishes, seamless terrazzo, car park deck waterproofing and corrosion protection systems... to name just a few. Our corporate objective is to satisfy your flooring needs.

Flowcrete Australia Pty Ltd
Brisbane Office (Regional)
Unit 2/41 Deakin Street
Brendale QLD 4500
Tel: +61 7 3205 7115
Fax: +61 7 3205 3116
Email: australia@flowcrete.com
Flowcrete Australia is an RPM company

Sydney Office
Unit 1/12 Blackmore Road
Smeaton Grange NSW 2567
Tel: +61 2 4648 0397
Fax: +61 2 4648 0719

Technical Information

The figures that follow are typical properties achieved in laboratory tests at 20 °C and at 50% Relative Humidity.

Slip Resistance	TRRL Pendulum Slip Test Dry >40 Wet depends on specification
-----------------	---

Textured systems are recommended to meet slip resistance value requirements for wet conditions and/or surface contaminants (wet or dry) - please contact our Technical Advisors for further details and specifications

Impact Resistance	ISO6272 1 kg weight >1.8 m 2 kg weight >1.5 m
-------------------	--

Abrasion Resistance	BS 8204-2 Class AR1 – Heavy duty industrial and commercial
---------------------	---

Temperature Resistance	Tolerant of sustained temperatures up to 70 °C
------------------------	--

Water Permeability	Nil-Karsten Test (impermeable)
--------------------	--------------------------------

Chemical Resistance	Contact Technical Department Good resistance to tea, coffee, cola, fruit juice, soaps and bleach
---------------------	---

Compressive Strength	60 N/mm ² (BS6319)
----------------------	-------------------------------

Flexural Strength	20 N/mm ² (BS6319)
-------------------	-------------------------------

Tensile Strength	15 N/mm ² (BS6319)
------------------	-------------------------------

Bond Strength	Greater than cohesive strength of 25 N/mm ² concrete. > 1.5 MPa
---------------	--

Speed of Cure (per coat)

Full traffic	1 hr
Full chemical cure	1 hr

Cure at ambient temperatures in the range 0°C to +30°C can be achieved by altering the quantity of catalyst used. For applications below 0°C, please consult our Technical Department

Aftercare - Cleaning and Maintenance

Clean floors regularly using a rotary scrubber in conjunction with a mildly alkaline detergent (without solvent).

Important Notes

Flowcrete's products are guaranteed against defective materials and manufacture and are sold subject to its standard Terms and Conditions of Sale, copies of which can be obtained on request.

Further Information

To ensure you are specifying a fit for purpose flooring system for your project please consult our Technical Advisors on the number below or visit our website to register your interest in specifying one of the most durable floors on the market.