

## Flowcrete MF (3-4 mm)



### Description

Flowcrete MF is a chemical resistant polyurethane resin floor system with smooth matt coloured finish.

### Typical Uses

Ideal for dry or semi-wet processing zones such as food or pharmaceutical packaging zones.

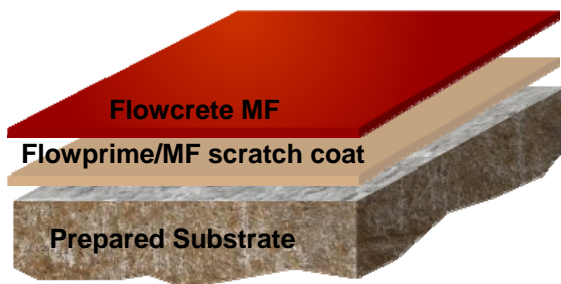
### Benefits

- High chemical resistance
- Easy to clean and sterilise
- Non-tainting and non-dusting
- High abrasion resistance
- Low odour during application
- Monolithic
- Fast return to service

### Project References

Local references available upon request

### System Design



### Standard Colour Chart



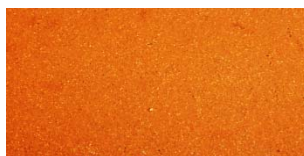
Rich Cream



Warm Buff



Coral Red



Clay



Pewter Grey



Signal Green



Ash Grey



Blue

The applied colours may differ slightly from the examples shown above. Contact our customer services for a true colour sample or a special colour match.

## Model Specification

Product: Flowcrete MF

Finish: Matt

Thickness: 3-4mm

Colour: \_\_\_\_\_

Preparatory work and application in accordance with manufacturer's instructions.

Manufacturer: Flowcrete Australia Pty Ltd

Telephone: Customer Service - + 61 7 3205 7115

## Substrate Requirements

Concrete or screed substrate should be a minimum of 25N/ mm<sup>2</sup>, free from laitance, dust and other contamination. The substrate should be surface dry and free from rising damp and ground water pressure.

## Available in Multi-Pack Supply Format

Flowcrete HF/MF/RT (A+B)

Flowcrete HF/MF/RT Filler C

## Products Included in this System

Flowprime or Flowcrete MF scratch coat

Flowcrete MF

Detailed application instructions are available upon request.

## Installation Service

The installation should be carried out by a Flowcrete approved applicator with a documented quality assurance scheme. Obtain details of our approved contractors by contacting our customer service team or enquiring via our web site at [www.flowcreteaustralia.com.au](http://www.flowcreteaustralia.com.au).

## Environmental Considerations

The finished system is assessed as non-hazardous to health and the environment. The long service life and seamless surface reduce the need for repairs, maintenance and cleaning. Environmental and health considerations are controlled during manufacture and application of the products by Flowcrete staff and fully trained and experienced contractors.

## Focus on the Floorzone

Flowcrete Australia Pty Ltd is a division of the Flowcrete Group, world leaders in specialist industrial and commercial flooring. Systems available include: underfloor heating systems, floor screeds, surface damp proof membranes, decorative floor finishes, seamless terrazzo, car park deck waterproofing and corrosion protection systems... to name just a few. Our corporate objective is to satisfy your flooring needs.

## Colour Stability

Flowcrete MF is not colour fast and may change colour over time (exhibits a yellowing effect). Colour change depends on the UV light and heat levels present and hence the rate of change cannot be predicted. This is more noticeable in light colours and blues but does not compromise the product's chemical resistance or physical characteristics. Consult our Technical Department for UV light stable specification.

## Technical Information

The figures that follow are typical properties achieved in laboratory tests at 20 °C and at 50% Relative Humidity.

Fire Resistance	BS476:Part 7 Surface Spread of Flame: Class 2 (indicative)
Slip Resistance	TRRL Pendulum Slip Test Dry 70 Wet 25
Impact Resistance	BS8204 Part1 Cat: A (<0.5mm) ISO6272 1kg weight >1.8m 2kg weight >1.5m
Temperature Resistance	From -5°C to 70°C (at 3mm) -15°C to 90°C (at 4mm)
Coefficient of Thermal Expansion	ASTM C531: 5.70 x 10 <sup>-5</sup> °C <sup>-1</sup>
Water Permeability	Nil-Karsten test (impermeable)
Vapour Permeability	ASTM E96:90 5g/m <sup>2</sup> /24hrs (at 4mm thick)
Chemical Resistance	Contact Technical Department. Excellent resistance to sugars and most acids (organic and inorganic)
Abrasion Resistance	Taber Abrader: 0.1g loss per 1000 cycles (1kg load using CS17 wheels)
Compressive Strength	55 N/mm <sup>2</sup> (BS6319)
Flexural Strength	20 N/mm <sup>2</sup> (BS6319)
Tensile Strength	12 N/mm <sup>2</sup> (BS6319)
Bond Strength	Greater than cohesive strength of 25 N/mm <sup>2</sup> concrete. >1.5 MPa.
Toxicity (when cured)	Taint Free to sensitive foodstuffs

## Speed of Cure

	10°C	20°C	30°C
Light traffic	36 hrs	24 hrs	12 hrs
Full traffic	72 hrs	48 hrs	24 hrs
Full chemical cure	10 days	7 days	6 days

## Aftercare - Cleaning and Maintenance

Clean regularly using a single or double headed rotary scrubber drier in conjunction with a mildly alkaline detergent.

## Important Note

Flowcrete's products are guaranteed against defective materials and manufacture and are sold subject to its standard Terms and Conditions of Sale, copies of which can be obtained on request.

## Further Information

To ensure you are specifying a fit for purpose flooring system for your project please consult our Technical Advisors on the number below or visit our website to register your interest in specifying one of the most durable floors on the market.

Flowcrete Australia Pty Ltd  
Brisbane Office (Regional)  
Unit 2/41 Deakin Street  
Brendale QLD 4500  
Tel: +61 7 3205 7115  
Fax: +61 7 3205 3116  
Email: [australia@flowcrete.com](mailto:australia@flowcrete.com)  
Flowcrete Australia is an RPM company

Sydney Office  
Unit 1/12 Blackmore Road  
Smeaton Grange NSW 2567  
Tel: +61 2 4648 0397  
Fax: +61 2 4648 0719