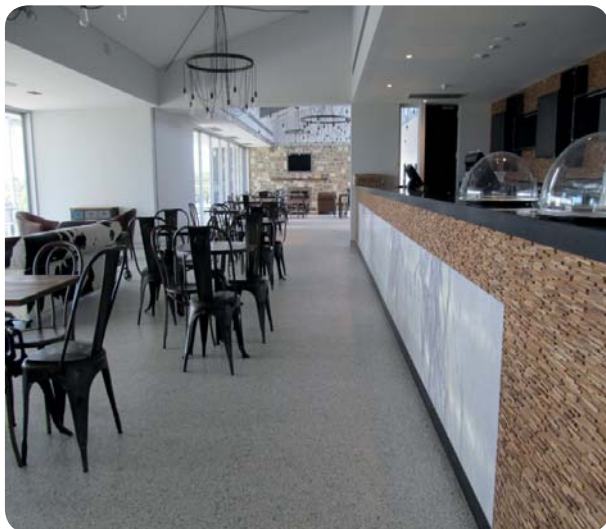


## Flowfast Kristalina (2-3mm)

A smooth, decorative, MMA resin floor finish that delivers a fast track solution for contemporary commercial developments.

Typically used in public areas including cafes, museums, restaurants, cafes and supermarkets.



### Fast Curing:

MMA additives speed up cure time, reducing construction schedules.



### Attractive:

Offers extensive design potential to deliver the wow-factor underfoot.



### Seamless:

Delivers a hygienic seam-free surface that is easy to clean and maintain.



### Resistant:

Holds its own against impact, traffic and chemical attack.

## Technical Profile

### FIRE RESISTANCE

EN 1350-1

C<sub>FL</sub> - s1

### SLIP RESISTANCE

Method described in AS4586-2013

Dry & Wet Rating is dependant on specification (in accordance with AS4586-2013)

The slipperiness of flooring materials can change significantly, due to the installation process, after short periods of use, due to inappropriate maintenance, longer-term wear and/or surface contaminants (wet or dry).

Textured systems are recommended to meet slip resistance value requirements for wet conditions and/or surface contaminants (wet or dry) - please contact our Technical Advisors for further details

### TEMPERATURE RESISTANCE

Tolerant of sustained temperatures up to 50°C

### WATER PERMEABILITY

Karsten Test

Nil (Impermeable)

### CHEMICAL RESISTANCE

Contact Technical Department

### IMPACT RESISTANCE

EN ISO 6272

10Nm

### ABRASION RESISTANCE

BS 8204-2

Class AR1

### BOND STRENGTH

ASTM D4541 (Pull-Off Test)

> 1.5MPa\*

### SPEED OF CURE\*\*

PER COAT

Full Traffic

1 hr

Full Chemical Cure

1 hr

These figures are typical properties achieved in laboratory tests at 20°C and at 50% Relative Humidity.

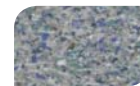
\*Assume concrete or substrate is a minimum of 25 N/mm<sup>2</sup>



Volcanic Ash



Aztec



Opal



Pewter



Blue Metal



Moss

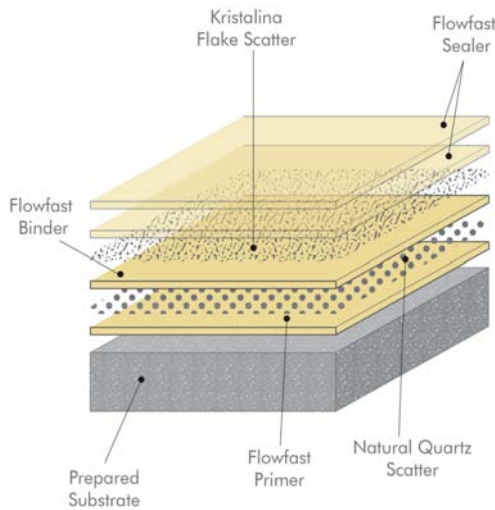
The applied colours may differ from the examples shown.  
For a full colour chart and samples, contact your local Flowcrete office.

## Model Specification

<b>System</b>	Flowfast Kristalina
<b>Finish</b>	Satin
<b>Thickness</b>	Dependant on Specification
<b>Manufacturer</b>	Flowcrete
<b>Contact</b>	+61 7 3205 7115

Preparatory work and application in accordance with manufacturer's instructions.

## System Design



## Products Included In This System

<b>Layer 1</b>	Flowfast Primer
	Natural Quartz Scatter
<b>Layer 2</b>	Flowfast Binder
	Kristalina Flakes Scatter
<b>Layer 3</b>	Flowfast Sealer
<b>Layer 4</b>	Flowfast Sealer

## Coving

Coving forms an integral part of the flooring system. It creates a sealed finish between the floor and wall joint. Please refer to Flowtex F1 Coving

Mortar for further information.

## Substrate Requirements

Concrete or screed substrate should be a minimum of 25 N/mm<sup>2</sup>, free from laitence, dust and other contamination. Substrate should be dry to 75% RH as per AS1884-2012. Must be free from rising ground moisture or must have an effective DPM in place.

## Installation Service

The installation should be carried out by a experienced contractor with a documented quality assurance scheme. For details of our recommended contractors, contact your local Flowcrete office. Detailed application instructions are available upon request.

## Environmental Considerations

The finished system is assessed as non-hazardous to health and the environment. The long service life and seamless surface reduce the need for repairs and maintenance. Environmental and health considerations are controlled during manufacture and application of the products by Flowcrete staff and fully trained application teams.

## Aftercare, Cleaning & Maintenance

Please refer to Flowcrete Australia's current Cleaning and Maintenance Recommendations Guide.

## Warranty

Flowcrete products are guaranteed against defective materials and manufacture and are sold subject to our standard 'Warranty, Terms and Conditions of Sale', copies of which can be obtained on request. Warranty does not cover suitability, fit for purpose or any consequential or related damages. Please review warranty in detail before installing the products.

Version 1.0 [21/02/17]

Flowcrete Australia Pty Ltd  
 Unit 2 41 Deakin Street Brendale QLD 4500 Australia  
 Tel: +61 7 3205 7115 Fax: +61 7 3205 3116  
 Unit 1 12 Blackmore Road Smeaton Grange NSW 2567 Australia  
 Tel: +61 2 4648 0397 Fax: +61 2 4648 0719  
 Email: australia@flowcrete.com

N.B.

1. Light colours may require additional coats to achieve desired results.
2. Flowcrete assumes no responsibility for the application of incorrect colour.
3. It is recommended that top coat colours match base coat colours to achieve desired results.
4. This product is not UV stable and will discolour unless otherwise stated.
5. Technical Data Sheet to be read in conjunction with Method Statements and Product Data Sheets.

[www.flowcreteaustralia.com.au](http://www.flowcreteaustralia.com.au)