

## Urban Expressions (2-3mm)

A smooth, understated, natural artistic dual tone polyurethane resin floor finish which provides excellent aesthetics and durability.

Typically used in retail stores, modern boutiques and commercial premises.



### Attractive:

Offers a decorative, natural, artistic multi-dimensional finish.



### Wear Resistant:

Holds its own against wear from commercial foot and trolley traffic.



### Easy to Clean:

Delivers a hygienic smooth surface that is easy to clean and maintain.



### Chemical Resistant:

Provides resistance against a wide range of chemicals.

## Technical Profile

### FIRE RESISTANCE

EN 13501-1

B<sub>FL</sub> - s1

### SLIP RESISTANCE

Method described in AS4586-2013

Dry & Wet Rating is dependant on specification (in accordance with AS4586-2013)

The slipperiness of flooring materials can change significantly, due to the installation process, after short periods of use, due to inappropriate maintenance, longer-term wear and/or surface contaminants (wet or dry).

Textured systems are recommended to meet slip resistance value requirements for wet conditions and/or surface contaminants (wet or dry) - please contact our Technical Advisors for further details

### THERMAL RESISTANCE

Tolerant of sustained temperatures up to 60°C

### WATER PERMEABILITY

Karsten Test

Nil (Impermeable)

### CHEMICAL RESISTANCE

Contact Technical Department

### ABRASION RESISTANCE

Taber Abrader

80mg loss per 1000 cycles (1 kg load using CS17 wheels)

### FLEXURAL STRENGTH

BS6319

15 N/mm<sup>2</sup>

### TENSILE STRENGTH

BS6319

10 N/mm<sup>2</sup>

### BOND STRENGTH

ASTM D4541 (Pull-Off Test)

> 1.5MPa\*

### SURFACE HARDNESS

Shore D

65

### TEAR STRENGTH

BS6319

11MPa

### SPEED OF CURE\*\*

10°C

20°C

30°C

Light Traffic

36 hrs

24 hrs

16 hrs

Full Traffic

72 hrs

48 hrs

36 hrs

Full Chemical Cure

12 days

7 days

6 days

These figures are typical properties achieved in laboratory tests at 20°C and at 50% Relative Humidity.

\*Assume concrete or substrate is a minimum of 25 N/mm<sup>2</sup>.



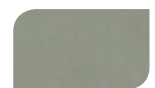
Midnight Green



Smokey Grey



Slate Grey



Morning Coffee



Old Gold



Dusty Grey

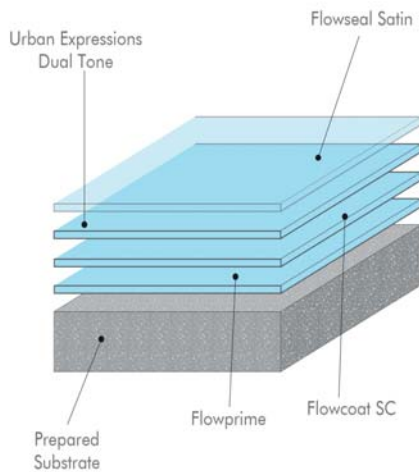
The applied colours may differ from the examples shown.  
For a full colour chart and samples, contact your local Flowcrete office.

## Model Specification

<b>System</b>	Urban Expressions Dual Tone
<b>Finish</b>	Satin
<b>Thickness</b>	Dependant on Specification
<b>Manufacturer</b>	Flowcrete
<b>Contact</b>	+61 7 3205 7115

Preparatory work and application in accordance with manufacturer's instructions.

## System Design



## Products Included In This System

<b>Layer 1</b>	Flowprime
<b>Layer 2</b>	Flowcoat SC
<b>Layer 3</b>	Urban Expressions Dual Tone
<b>Layer 4</b>	Flowseal Satin

## Coving

Coving forms an integral part of the flooring system. It creates a sealed finish between the floor and wall joint. Please refer to Flowtex F1 Coving Mortar for further information.

## Substrate Requirements

Concrete or screed substrate should be a minimum of 25 N/mm<sup>2</sup>, free from laitence, dust and other contamination. Substrate should be dry to 75% RH as per AS1884-2012. Must be free from rising ground moisture or must have an effective DPM in place.

## Installation Service

The installation should be carried out by a experienced contractor with a documented quality assurance scheme. For details of our recommended contractors, contact your local Flowcrete office. Detailed application instructions are available upon request.

## Environmental Considerations

The finished system is assessed as non-hazardous to health and the environment. The long service life and seamless surface reduce the need for repairs and maintenance. Environmental and health considerations are controlled during manufacture and application of the products by Flowcrete staff and fully trained application teams.

## Aftercare, Cleaning & Maintenance

Please refer to Flowcrete Australia's current Cleaning and Maintenance Recommendations Guide.

## Warranty

Flowcrete products are guaranteed against defective materials and manufacture and are sold subject to our standard 'Warranty, Terms and Conditions of Sale', copies of which can be obtained on request. Warranty does not cover suitability, fit for purpose or any consequential or related damages. Please review warranty in detail before installing the products.