

Flowsports SRQ (2mm)

A chemical resistant, non-slip, decorative epoxy resin-based flooring system featuring coloured quartz granules.

Typically used for internal applications including pool surrounds and amenities.



Chemical Resistant:

Provides high resistance against a range of chemicals.



Slip Resistant:

Textured aggregates provide non slip traction underfoot.



Decorative:

Featuring decorative coloured quartz aggregates within the resin matrix.



Durable:

Hard wearing, durable and abrasion resistant.

Technical Profile

FIRE RESISTANCE

EN 13501-1

B_{FL} - s1

SLIP RESISTANCE

Method described in AS4586-2013

Dry & Wet Rating is dependant on specification (in accordance with AS4586-2013)

The slipperiness of flooring materials can change significantly, due to the installation process, after short periods of use, due to inappropriate maintenance, longer-term wear and/or surface contaminants (wet or dry).

Textured systems are recommended to meet slip resistance value requirements for wet conditions and/or surface contaminants (wet or dry) - please contact our Technical Advisors for further details

TEMPERATURE RESISTANCE

Tolerant up to 60°C

WATER PERMEABILITY

Karsten Test

Nil (Impermeable)

SURFACE HARDNESS

Koenig Hardness Test

180secs

BOND STRENGTH

ASTM D4541 (Pull-Off Test)

> 1.5MPa*

FLEXURAL STRENGTH

BS6319

15 N/mm²

TENSILE STRENGTH

BS6319

10 N/mm²

IMPACT RESISTANCE

ISO 6272

1 kg weight > 1.8m

2 kg weight > 1.5m

CHEMICAL RESISTANCE

Contact Technical Department

SPEED OF CURE**

10°C

20°C

30°C

Light Traffic

36 hrs

24 hrs

18 hrs

Full Traffic

72 hrs

48 hrs

36 hrs

Full Chemical Cure

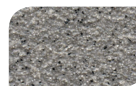
12 days

7 days

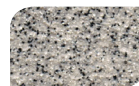
6 days

These figures are typical properties achieved in laboratory tests at 20°C and at 50% Relative Humidity.

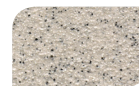
Textured systems are recommended to meet slip resistance value requirements for wet conditions and/or surface contaminants (wet/dry). Please contact our Technical Advisors for further details.



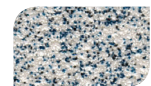
Dark Grey



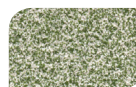
Mid Grey



Light Grey



Blue



Green



Yellow



Red



Brown

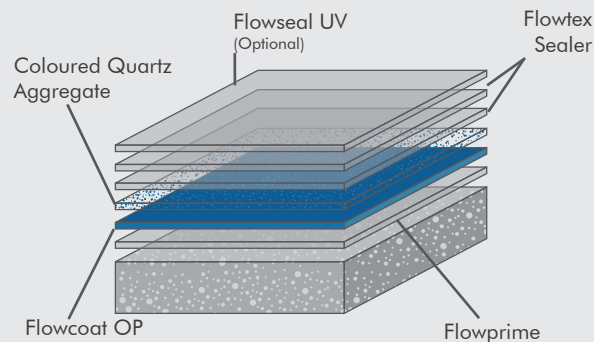
The applied colours may differ from the examples shown. For a full colour chart and samples, contact your local Flowcrete office.

Model Specification

System	Flowsports SRQ
Finish	Gloss
Thickness	2mm
Manufacturer	Flowcrete Australia Pty Ltd
Contact	+ 61 7 3205 7115

Preparatory work and application in accordance with manufacturer's instructions.

System Design



Products Included In This System

Layer 1	Flowprime
Layer 2	Flowcoat OP
	Coloured Quartz Aggregate
Layer 3	Flowtex Sealer
Layer 4	Flowtex Sealer
Layer 5	Flowseal UV *If Required

Coving

Coving can form an integral part of the flooring system. It creates a sealed finish between the floor and wall joint. Please refer to Flowtex F1 Coving Mortar for further information.

Substrate Requirements

Concrete or screed substrate should be a minimum of 25 N/mm², free from laitance, dust and other contamination. Substrate should be dry to 75% RH as per ASTM F2170

(AS1884:2012).

Installation Service

The installation should be carried out by a qualified contractor with a documented quality assurance scheme. For details of our recommended contractors, contact your local Flowcrete office. Detailed application instructions are available upon request.

Environmental Considerations

The finished system is assessed as non-hazardous to health and the environment. The long service life and seamless surface reduce the need for repairs and maintenance. Environmental and health considerations are controlled during manufacture of the products by Flowcrete staff.

Aftercare, Cleaning & Maintenance

Clean regularly using a single or double headed rotary scrubber drier in conjunction with a mildly alkaline detergent. Please refer to Flowcrete's Cleaning & Maintenance Guide for further information.

Warranty

Flowcrete products are guaranteed against defective materials and manufacture and are sold subject to our standard 'Warranty, Terms and Conditions of Sale', copies of which can be obtained on request. Warranty does not cover suitability, fit for purpose or any consequential or related damages. Please review warranty in detail before installing the products.

Method Statement

System	Flowsports SRQ
Specification	2mm Gloss Finish

This specification assumes a concrete compressive strength greater than 25 N/mm², application and curing temperatures of 10–35°C, the presence of an effective damp proof membrane below substrate and concrete moisture content less than 75% RH. If moisture content is above 75% RH, please contact Flowcrete Australia.

This specification must be read in conjunction with relevant product technical data sheets and the application of all materials is to be strictly in accordance with manufacturer's instructions.

Manufacturer	Flowcrete Australia Pty Ltd
Address	Unit 2, 41 Deakin Street
Suburb	Brendale
State	QLD
Postcode	4500
Telephone	+61 7 3205 7115
Email	australia@flowcrete.com

Outline for Installation

Mechanically Prepare Substrate	
Apply Flowprime	@ 0.2kg/m ²
Apply Flowcoat OP	@ 0.2kg/m ²
Fully Broadcast Coloured Quartz Aggregate	@ 2kg/m ²
Apply Flowtex Sealer	@ 0.35kg/m ²
Apply Flowtex Sealer	@ 0.2kg/m ²
Apply Flowseal UV *Optional	@ 0.15kg/m ²

Storage

12 months in an unopened packaging stored at a temperatures of 5-40°C.

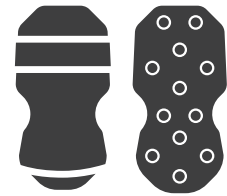
Protect from frost, weather, moisture and contaminant ingress.

Application Equipment

The use of correct application equipment is critical as incorrect applications tools can result in the poor finishing and incorrect material consumption. Always test the application equipment prior to commencing work.



10-12mm Nap Roller
Cover - Lambswool
*Rolana or Equivalent



Spike Shoes



Slow Speed Drill with
Helical Mixer Head



Squeegee

Safety Precautions

Wear appropriate Personal Protective Equipment (PPE) including masks, gloves, eye protection and protective clothing during mixing and application. Ensure the working area is well ventilated and follow the appropriate Health and Safety guidelines applicable to the location where the application is undertaken.

Material Set-Up

Before commencing work ensure that your material is set-up by separating all components (e.g. Base A, Hardener B, Filler C etc.) to ensure that all material is correct. Check product labels and ensure there are equal amounts of product.

Site Set-Up

Before commencing work ensure that your site is set-up. Mark the floor according to the specification with masking tape or similar to clearly identify what area (m²) each unit will cover. If this is not achieved (greater or less consumption than the specified amount) immediately stop and contact Flowcrete.

Surface Preparation

Surface preparation is to be completed by totally enclosed (light shot blasting) or coarse diamond grinding. All cementitious laitance must be removed to expose a sound substrate and provide a dry, dust free, open textured surface. All hard to reach areas and areas around the perimeter must be prepared using hand held preparation equipment.

Any damaged areas must be repaired with Flowtex F1 mortar. Consult Flowcrete prior to using an alternative repair mortar. Any rough or uneven areas must be made smooth with Flowcoat SC (Universal Resin Base A, Universal Hardener B, Sand/Flour). Consult Flowcrete prior to using an alternative epoxy scratch coat.

Application of Flowprime.

The substrate must be surface dry before the application of either Flowprime.

1. Mixing Flowprime

Decant required amount of material by weight using digital scales.

Stir Base A to re-disperse any settlement. Add Hardener B to the Base A container, and drain thoroughly. Mix with a slow speed drill and helical spinner head for 1 minute, taking care not to entrain air. Transfer to a clean container and remix for 30 seconds.

2. Application

Immediately after mixing, apply the Flowprime by squeegee and/or roller.

Application of Flowcoat OP

The substrate must be surface dry before the application of Flowcoat OP. Flowcoat OP must be applied within 24 hours following the application of Flowprime.

1. Mixing

Pack components are pre-weighed for optimum performance. We recommend that you do not split or proportion packs, however, if required this must be completed by weight using digital scales.

Stir Base A to re-disperse any settlement. Add Pigment (if supplied separately) and mix until uniform. Add Hardener B to the Base A container, and drain thoroughly. Mix with a slow speed drill and helical spinner head for 90 seconds, taking care not to entrain air. Add between 2 - 7% (depending on conditions) Xylene and mix for a further 30 seconds.

2. Application

Immediately after mixing, apply the Flowcoat OP by squeegee and/or roller. Whilst Flowcoat OP is still wet, fully broadcast with coloured quartz aggregate until refusal. Allow to cure. Lightly scrape the surface to remove any loosely bonded aggregates, sweep and vacuum remaining aggregates.

Application of Flowtex Sealer

The substrate must be surface dry before the application of Flowtex Sealer. Flowtex Sealer must be applied within 24 hours following the application of Flowcoat OP.

1. Mixing

Decant required amount of material by weight using digital scales.

Stir Base A to re-disperse any settlement. Add Hardener B to the Base A container, and drain thoroughly. Mix with a slow speed drill and helical spinner head for 90 seconds, taking care not to entrain air. Add between 2 - 7% (depending on conditions) Xylene and mix for a further 30 seconds.

2. Application

Immediately after mixing, apply the Flowtex Sealer by squeegee and/or roller. Allow to cure.

Application of 2nd Coat of Flowtex Sealer

The substrate must be surface dry before the application of Flowtex Sealer. Flowtex Sealer must be applied within 24 hours. Following the application of the 1st coat of Flowtex Sealer.

1. Mixing

Decant required amount of material by weight using digital scales.

Stir Base A to re-disperse any settlement. Add Hardener B to the Base A container, and drain thoroughly.

Mix with a slow speed drill and helical spinner head for 90 seconds, taking care not to entrain air. Add between 2 - 7% (depending on conditions) Xylene and mix for a further 30 seconds.

2. Application

Immediately after mixing, apply the Flowtex Sealer by squeegee and/or roller. Allow to cure.

Application of Optional 3rd Coat

Flowseal UV

The substrate must be surface dry before the application of Flowseal UV. Flowseal UV must be applied within 24 hours following the application of the 2nd coat of Flowtex Sealer.

1. Mixing

Pack components are pre-weighed for optimum performance. We recommend that you do not split or proportion pack, however, if required this must be completed by weight using digital scales.

Stir Base A to re-disperse any settlement. Add Hardener B to the Base A container, and drain thoroughly. Mix with a slow speed drill and helical spinner head for 90 seconds, taking care not to entrain air.

2. Application

Immediately after mixing, apply the Flowseal UV by roller only. Allow to cure.

Trafficking

Allow to cure for a minimum of 24 hours at temperatures no less than 10°C before light trafficking.

Note

When printed or saved externally, this document is uncontrolled and therefore may not be the latest version.

Any recommendation or suggestion relating to the use of the products made by Flowcrete Australia Pty Ltd., whether in its technical literature, or in response to a specific enquiry, or otherwise, is based upon data believed to be reliable, however the products and information are intended for use by Customers having requisite skill and know-how in the industry and therefore it is for the Customer to satisfy itself of the suitability of the products for its own particular use and it shall be deemed that the Customer has done so at its sole discretion and risk.

Additional Notes

1. Maximum overcoat time is 24 hours.
2. The product is fully hardened after 5–7 days.
3. The applied colours may differ from the examples shown.
4. Light and vibrant colours may require additional coats to achieve desired results.
5. Flowcrete assumes no responsibility for the application of incorrect colour.
6. It is recommended that top coat colours match base coat colours to achieve desired results.
7. This system is not UV stable and will discolour unless otherwise stated.
8. Do not cover or wash within the first 24 hours of curing.
9. This system should have no contact with water for 5 days at 22°C or blooming may occur.
10. This system should be installed at 3°C above the dew point.
11. A low temperature/high humidity environment can cause blooming issues.
12. Please ensure application temperature and RH limits are followed.
13. Wind or strong airflow may cause quick curing and drying of the system.
14. Ensure wind or strong airflow is eliminated during application, however adequate safety ventilation should still be followed.

15. Direct heat during application of the system can cause flash curing and potential delamination. Ensure you do not apply this system to substrates with temperatures exceeding 35°C.